



通力木業

**SINCE 1999**

The world's most influential wood production and circulation enterprises. Always adhere to high quality product positioning

# Tongli Veneer Album

Engineered Veneer series





# 通力木業

Founded in 1999 and based in the Pearl River Delta with nationwide influence and global impact, our company strives to become the most influential fancy wood panels and distribution enterprise in China's wood panel industry. We are committed to building a renowned brand factory and creating a global presence in the wood decorative surface sector.

**20000+**m<sup>2</sup>

Factory area

**100000+**m<sup>3</sup>

Annual output of various plates

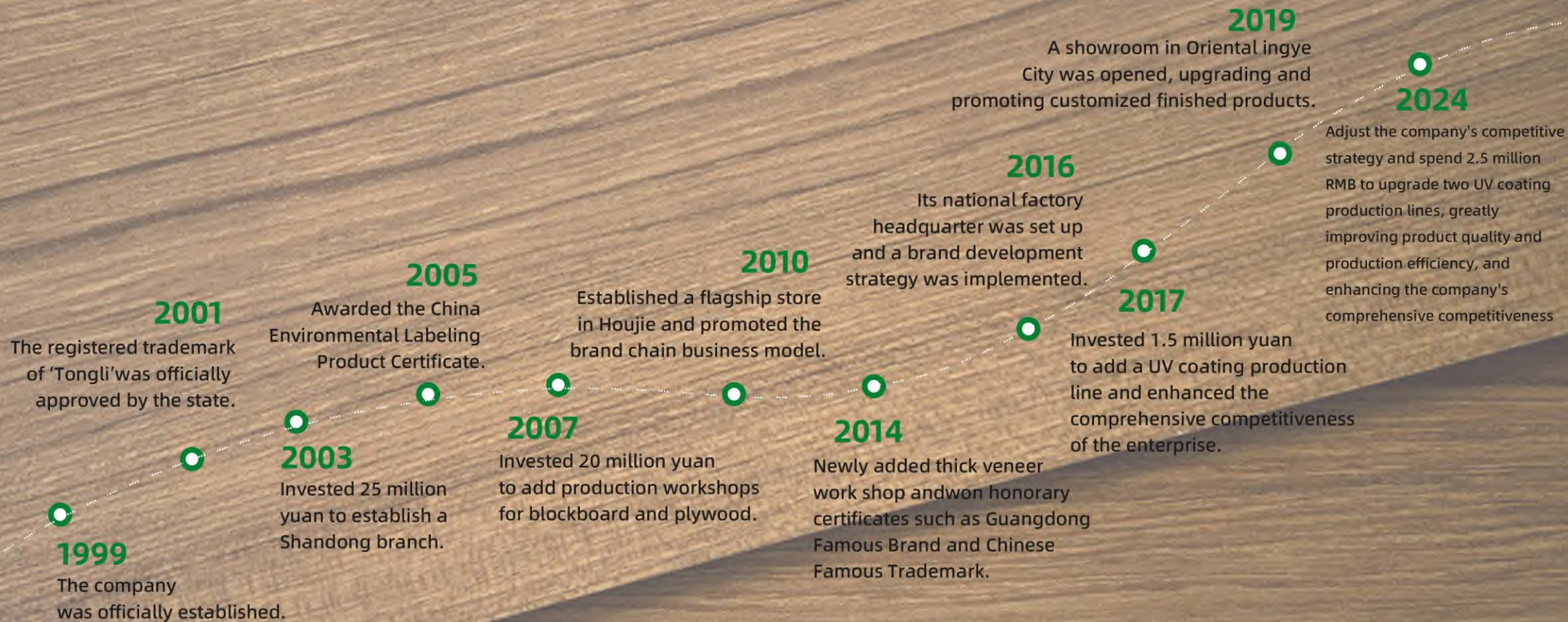
**100+**people

Senior technician

Our company's products are widely used as production materials for furniture, doors, wall panels, wardrobes, and more. They are generally suitable for **furniture factories, door factories, whole-house customization factories, wardrobe production enterprises, hotel projects, and real estate decoration**. Our products have been exported to foreign markets such as Thailand, Singapore, Malaysia, the Philippines, Indonesia, India, Nigeria, and elsewhere.



# DEVELOPMENT PATH





# QUALIFICATION AND HONOR CERTIFICATE





# CUSTOMIZATION AND DELIVERY



**WE HAVE A COMPLETE SHEET CUSTOMIZATION SYSTEM AND FAST DELIVERY ABILITY**

Lean production system, advanced and complete production equipment, standardized operation mode, loyal and professional team, Exquisite technology, stable supply ability



# THICK SKIN VENEER PROCESS



## WE HAVE ADVANCED THICK LEATHER **VENEER** WORKSHOP

Thick skin seamless splicing process, 24 years thick skin technology, no color difference; Impermeable, tight natural fit



# THIN SKIN VENEER PROCESS



## WE HAVE A MORE COMPREHENSIVE VENEER WORKSHOP

Years of thin veneer experience master, 24 years of thin veneer process, no color difference; Impermeable, tight, delicate and natural



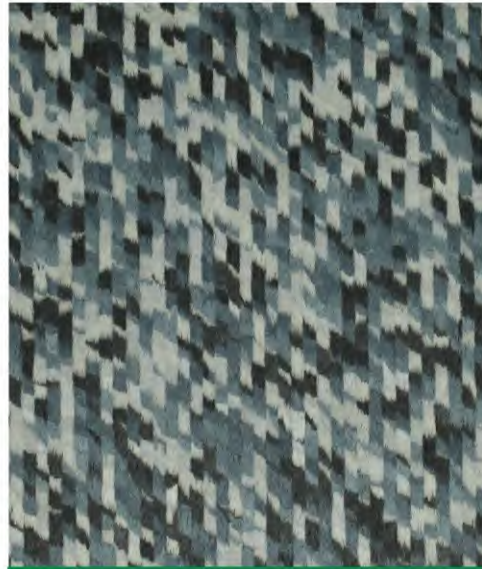
The image is a composite background for an advertisement. The top-left portion features a grid of rectangular panels in various shades of grey and white, some with a wood grain texture. The top-right portion shows a close-up of a natural wood grain in warm, golden-brown tones. The bottom portion is a large, colorful, abstract pattern of diagonal stripes in shades of red, yellow, green, and blue, resembling a woven fabric or a multi-layered veneer.

**ENGINEERED VENEER SERIES**





TL-H-1912



TL-H-1916



TL-H-1



TL-H-2



TL-H-3



TL-H-4



TL-H-5



TL-H-3278C

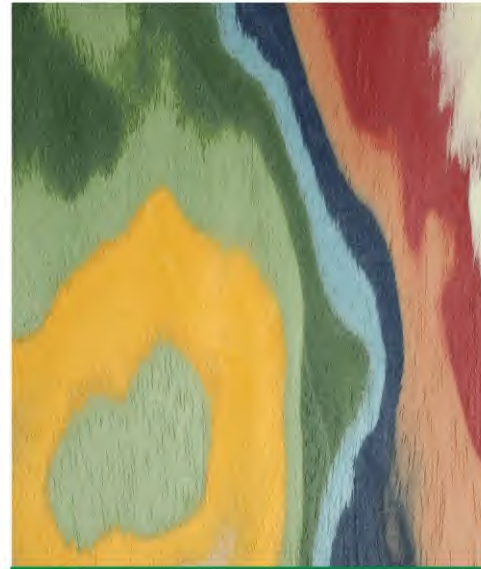




TL-H-3234



TL-H-3280C



TL-H-1932



TL-H-1902



TL-H-3006



TL-H-232



TL-H-3324



TL-H-3374





TL-H-YGW1



TL-H-YGW2



TL-H-801N



TL-H-831N



TL-H-863N



TL-H-817N



TL-H-8816N



TL-H-3262





TL-H-1920



TL-H-2904



TL-H-1918



TL-H-3300



TL-H-3332



TL-H-3258



TL-H-3294



TL-H-3304

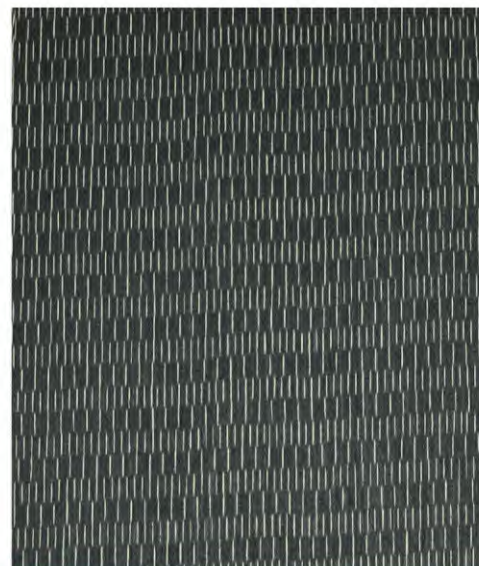




TL-H-2900



TL-H-2906



TL-H-3248



TL-H-3352



TL-H-2501



TL-H-3266



TL-H-3002



TL-H-3330





TL-H-2802



TL-H-8042



TL-H-1212



TL-H-1216



TL-H-3203



TL-H-3268

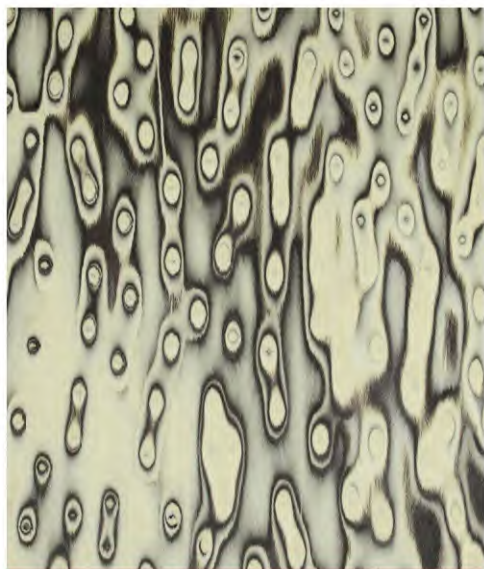


TL-H-3282

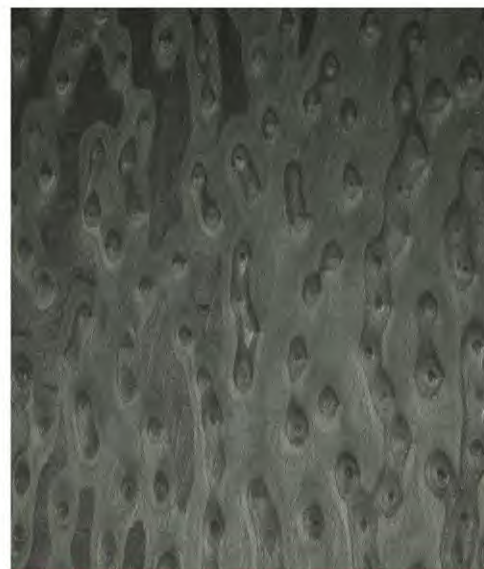


TL-H-3328





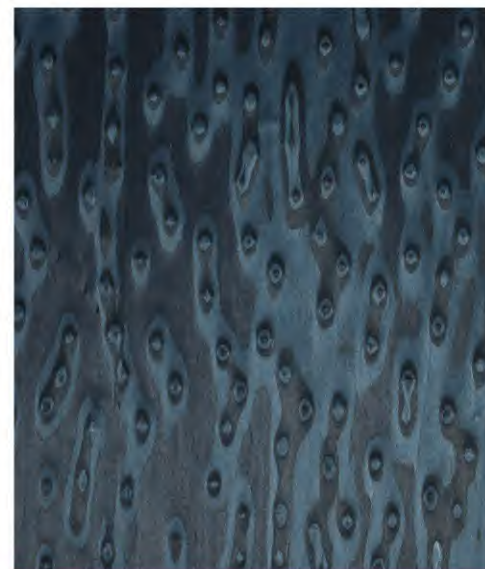
TL-H-918



TL-H-900



TL-H-906



TL-H-908



TL-H-910



TL-H-916



TL-H-920



TL-H-3212





TL-H-3222



TL-H-3350



TL-H-3216



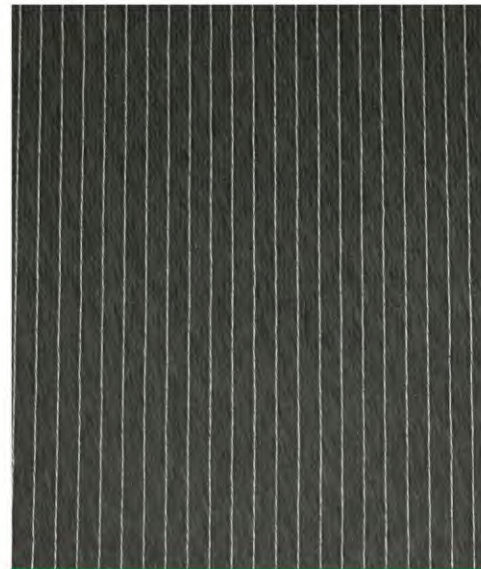
TL-H-3308



TL-H-3226



TL-H-3256



TL-H-1922



TL-H-3210





TL-H-3310



TL-H-8601



TL-H-3204



TL-H-3208



TL-H-3264



TL-H-3298



TL-H-3302



TL-H-3318





TL-H-3240



TL-H-3242



TL-H-3218



TL-H-454C



TL-H-468C



TL-H-490C



TL-H-1712C



TL-H-2206C





TL-H-3276C



TL-H-3306C



TL-H-3326C



TL-H-3338C



TL-H-8806C



TL-H-8807C



TL-H-378N



TL-H-4002N











# CONTACT US

## TEL/FAX

☎ 0769-85914999

☎ 0769-85914111

## EMAIL

✉ tongli@tongli-dg.com

## WEBSITE

🌐 [www.tplywood.com](http://www.tplywood.com)

🌐 [www.tongli-dg.com](http://www.tongli-dg.com)

🌐 [tongli-dg.en.alibaba.com](http://tongli-dg.en.alibaba.com)

## ADD

📍 No.655 Houjie Section, Huanguan Expressway, Houjie Town, Dongguan City, Guangdong Province

